



浙江人禾电子 企业宣传册

ZHEJIANG RHI ELECTRIC CO.,LTD
ENTERPRISE BROCHURE

—● 方正为人·禾泽天下 ●—

UPHOLD MORALITY AND INTEGRITY, SPREAD GREEN AND HOPE.



CONTENTS

01

公司概况
Company

企业简介 COMPANY INTRODUCTION

组织架构 COMPANY ORGANIZATION

企业历程 COMPANY HISTORY

企业文化 COMPANY CULTURE

02

证书/设备
Certificate / Equipment

企业证书 COMPANY CERTIFICATE

试验设备 TEST EQUIPMENT

试验报告 TEST REPORTS

生产车间 WORKSHOP

专注于新能源领域，技术创新
Focus on new energy filed, innovate technology

03

产品介绍

Product Introduction

软铜排系列 FLEXIBLE COPPER BUSBAR

硬铜排系列 SOLID COPPER BUSBAR

铝排系列 ALUMINIUM BUSBAR

工艺介绍 PROCESS INTRODUCTION

铜排护套 BATTERY BUSBAR COVERS

其他绝缘护套 OTHER PLASTIC COVERS

Company Introduction

企业简介

- 浙江人禾电子有限公司专注于新能源电池连接系统和PVC浸塑软塑料制品的生产和研发。公司创建于2011年，现拥有7500平方米标准厂房，不断革新生产技术，持续发展。产品包含新能源电池连接，各类铜排铝排软硬连接，多种浸塑护套系列。
- 拥有领先的全自动生产线、六轴机器人车间、精密模具加工车间、实验室等生产车间及检测中心。完善的人禾制造体系拥有技术过硬、经验丰富的生产团队和国内外先进水平的生产模式及产品管理制度。建立了生产全过程质量可追溯和生产管理系统，企业符合IATF16949、ISO9001、ISO14001和ISO45001。产品符合欧盟ROHS，REACH环保标准，UL94V-0阻燃标准。企业严格按照国际质量管理体系的要求执行，确保品质稳定。
- 公司产品出口欧美，亚洲，澳洲等国家及地区，在国内我们为大中小型企业配套。人禾电子始终在新能源电池连接和软塑料制品领域上积极开拓，以责任谋求共进，以技术推动创新，与客户合作共赢，创造社会价值。人禾电子诚信诚意与您共赢合作！

Established in 2011, Zhejiang Rhi Electric Co.,Ltd is a professional manufacturer and exporter specialized in design, development and production of flexible / rigid copper busbars, aluminium busbars and busbar covers. We are located in Wenzhou City Zhejiang province, China. We have certificates of ROHS, REACH, UL94V-0, IATF16949, ISO9001, ISO14001 and ISO45001.

Covering an area of 7500 square meters, have over 150 employees, boast an annual sales figure that exceeds USD20,000,000 and currently export more than 40%.Products have been exported to Europe, America, Asia, Australia and other regions. They are widely used in EVS, energy storage system, charging pile and power distribution products etc.

We have capabilities of bending, punching, welding, riveting and dipping etc. Introduces automatic robots to improve production efficiency. With advanced equipment and experienced engineers, RHI supply top quality products and superior service,help customers to reduce costs and manage to get "win-win" in the fiercely competitive market.

Company Organization

组织架构

在产品研发、生产制造、质量管理、市场营销、网络运营、客服服务等部门的协力合作下，公司稳步发展，高效运作。

RHI has a sound organizational structure, and operates efficiently and steadily under cooperation among different departments.



Company Course

企业历程

2010

人禾初期，坐落于乐清市北白象镇白鹭屿村，面积90平方米，生产PVC浸塑软质产品。

We started business of PVC dipping products in a 90 m² factory in Bayluyu Village, Beibaixiang Town.



2011

注册乐清市人禾电子有限公司，广泛为五金、电气电工、白色家电、汽车等行业配套PVC软塑胶绝缘制品。

We were registered as Yueqing RHI Electric Co., Ltd and supplied products for electrical and other industries.



专注于新能源领域
Focus on new energy field

2013

迁址温州市乌牛镇东蒙工业区，成立国际贸易中心，产品销售海外，业务扩展至全球。

We moved to Dongmeng Industrial Zone. The international trade center was formally established. Our products are sold to competitive global markets.



2014

把电动汽车、储能、电池等新能源领域列为未来核心发展方向，为战略转型提供了基础。

We regarded new energy vehicles, charging piles, energy storage and battery as our core development.

2016

迁址温州大桥工业区，正式更名“浙江人禾电子有限公司”成为新能源连接系统的配套服务商。

We moved to Wenzhou bridge industrial Zone, we were renamed "Zhejiang RHI Electric Co., Ltd". We became provider of new energy connection system.

2018

迁址象阳工业区，拥有七千五百平方米独立厂房，引入机器人生产线，开拓新能源配套领域。

Moved to Xiangyang Industrial Zone, own 7500m² workshop & Robot production line. Marched into new energy field.

Company Culture

企业文化



企业精神：方正为人，禾泽天下

Enterprise Spirit : Uphold morality and integrity,spread green and hope.

企业愿景：引领行业革新，推动社会进步

Enterprise Vision: Leading Industry Innovation and Promoting Social Progress.

企业理念：以技术推动创新，创造社会价值，实现合作共赢

Enterprise philosophy: Promoting Innovation by Technology,Creating value,win-win cooperation.

全工艺

Fully Technics

我们具备完全国内外所有方案的工艺，包括3D折弯、焊接、冲压、浸塑、浸粉等所有工艺。

We have all processes of the domestic and foreign solutions, including 3D bending, welding, dipping, epoxy coating etc.

技术领先

Advance Technology

具备浸塑绝缘层核心配方和自动化生产工艺，自动焊接和高效率冲压成型工艺。

With the core formula of dipping insulating layer and automatic production process, automatic welding and high effective stamping molding process.

企业实力

Enterprise strength

质量可靠

Reliable Quality

严格按照IATF16949体系要求管控公司质量体系，MES系统确保生产可追溯。

Strictly manages the company's quality system upon IATF16949 requirements, MES system ensures production traceability.

同步研发

Synchronous Development

可以同步和客户进行产品研发，并选用最优方案帮助客户降低成本，降低客户的工作量，提升效率。

Synchronize discussion of new product R&D with customers, and choose the best solution to help customers reducing cost, reduce the workload of customers and improve efficiency.

Company Certificate 企业证书



IATF16949



ISO14001



ISO45001

Patent Certificate 专利证书



Test Reports 第三方检测报告



铜排RoHS (Copper Busbar)



铜软连接RoHS (Flexible Copper Busbar)



护套RoHS (PVC Cover)



护套Reach (PVC Cover)



护套UL94V-0 (PVC Cover)



禁用、限用物质测试
(Phthalates Test)



喷塑阻燃测试
(Epoxy powder coating)



喷塑耐化学性质性能
(Epoxy powder coating)

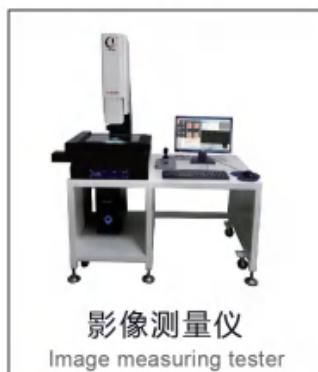
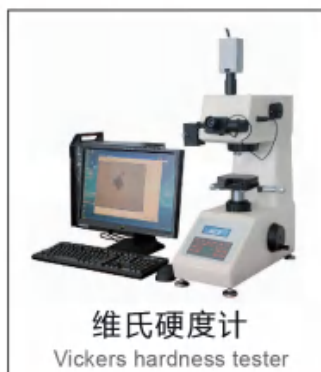


霉菌试验
(Mould Test)



垂直燃烧
(Vertical Flame Test)

Test Equipment 试验设备



Test Reports 测试报告

RHI 电质率测试报告

Reliability test report

测试项目: 电质率测试
测试标准: GB/T 2421-2008
测试日期: 2023.08.15

一、测试设备
电质率测试仪

二、测试环境
温度: 25±2℃, 湿度: 50±5%

三、测试结果
电质率: 98.5%



RHI 温升测试报告


Temperature test report

测试项目: 温升测试
测试标准: GB/T 2421-2008
测试日期: 2023.08.15

一、测试设备
温升测试仪

二、测试环境
温度: 25±2℃, 湿度: 50±5%

三、测试结果
温升: 15.5℃



RHI 耐压测试报告

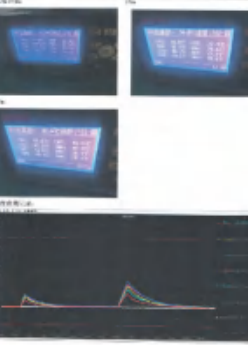
Dielectric test report

测试项目: 耐压测试
测试标准: GB/T 2421-2008
测试日期: 2023.08.15

一、测试设备
耐压测试仪

二、测试环境
温度: 25±2℃, 湿度: 50±5%

三、测试结果
耐压: 5000V



RHI 性能测试报告

Performance test report

测试项目: 性能测试
测试标准: GB/T 2421-2008
测试日期: 2023.08.15

一、测试设备
性能测试仪

二、测试环境
温度: 25±2℃, 湿度: 50±5%

三、测试结果
性能: 95%

测试项目	测试标准	测试结果
耐压测试	GB/T 2421-2008	5000V
温升测试	GB/T 2421-2008	15.5℃
电质率测试	GB/T 2421-2008	98.5%

RHI 盐雾测试报告

Salt spray test report

测试项目: 盐雾测试
测试标准: GB/T 2421-2008
测试日期: 2023.08.15

一、测试设备
盐雾测试仪

二、测试环境
温度: 35±2℃, 湿度: 95±5%

三、测试结果
盐雾: 100h



RHI 微漏附着力测试报告


Micro-leakage adhesion test report

测试项目: 微漏附着力测试
测试标准: GB/T 2421-2008
测试日期: 2023.08.15

一、测试设备
微漏附着力测试仪

二、测试环境
温度: 25±2℃, 湿度: 50±5%

三、测试结果
附着力: 10N



RHI 浙江人禾电子有限公司 PVC 覆层剥离实验报告

PVC coating delamination test report

测试项目: PVC 覆层剥离实验
测试标准: GB/T 2421-2008
测试日期: 2023.08.15

一、测试设备
PVC 覆层剥离测试仪

二、测试环境
温度: 25±2℃, 湿度: 50±5%

三、测试结果
剥离力: 1.5N



RHI 浙江人禾电子有限公司 热缩管附着力实验报告

Heat shrink tube adhesion test report

测试项目: 热缩管附着力实验
测试标准: GB/T 2421-2008
测试日期: 2023.08.15

一、测试设备
热缩管附着力测试仪

二、测试环境
温度: 120±2℃, 湿度: 50±5%

三、测试结果
附着力: 1.5N



RHI 耐久测试报告

Durability test report

测试项目: 耐久测试
测试标准: GB/T 2421-2008
测试日期: 2023.08.15

一、测试设备
耐久测试仪

二、测试环境
温度: 25±2℃, 湿度: 50±5%

三、测试结果
耐久: 1000h



RHI 耐冲击测试报告

Impact resistance test report

测试项目: 耐冲击测试
测试标准: GB/T 2421-2008
测试日期: 2023.08.15

一、测试设备
耐冲击测试仪

二、测试环境
温度: 25±2℃, 湿度: 50±5%

三、测试结果
冲击: 10J



RHI 浙江人禾电子有限公司 耐久测试报告


Durability test report

测试项目: 耐久测试
测试标准: GB/T 2421-2008
测试日期: 2023.08.15

一、测试设备
耐久测试仪

二、测试环境
温度: 25±2℃, 湿度: 50±5%

三、测试结果
耐久: 1000h



RHI 热缩管附着力实验报告

Heat shrink tube adhesion test report

测试项目: 热缩管附着力实验
测试标准: GB/T 2421-2008
测试日期: 2023.08.15

一、测试设备
热缩管附着力测试仪

二、测试环境
温度: 120±2℃, 湿度: 50±5%

三、测试结果
附着力: 1.5N



RHI 温升测试报告

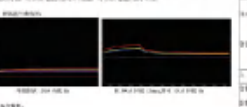
Temperature test report

测试项目: 温升测试
测试标准: GB/T 2421-2008
测试日期: 2023.08.15

一、测试设备
温升测试仪

二、测试环境
温度: 25±2℃, 湿度: 50±5%

三、测试结果
温升: 15.5℃



RHI 耐压测试报告

Dielectric test report

测试项目: 耐压测试
测试标准: GB/T 2421-2008
测试日期: 2023.08.15

一、测试设备
耐压测试仪

二、测试环境
温度: 25±2℃, 湿度: 50±5%

三、测试结果
耐压: 5000V



RHI 电质率测试报告

Reliability test report

测试项目: 电质率测试
测试标准: GB/T 2421-2008
测试日期: 2023.08.15

一、测试设备
电质率测试仪

二、测试环境
温度: 25±2℃, 湿度: 50±5%

三、测试结果
电质率: 98.5%



RHI 性能测试报告

Performance test report

测试项目: 性能测试
测试标准: GB/T 2421-2008
测试日期: 2023.08.15

一、测试设备
性能测试仪

二、测试环境
温度: 25±2℃, 湿度: 50±5%

三、测试结果
性能: 95%



Production Workshop

生产车间





冲压中心
Stamping Center



浸塑中心
Dipping Center



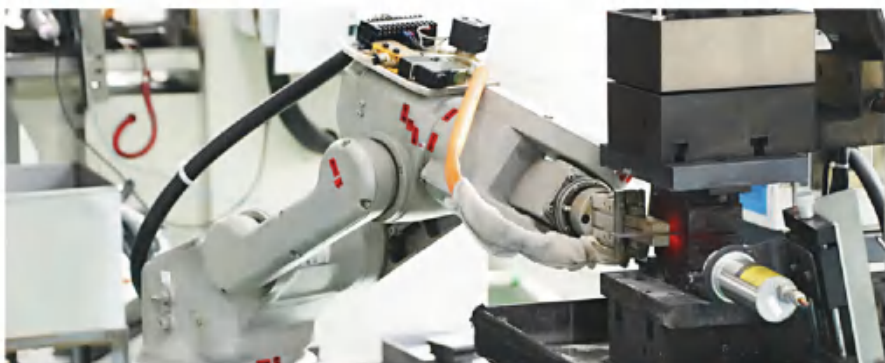
焊接中心
Welding Center



折弯中心
Bending Center



挤塑中心
Extruded Center

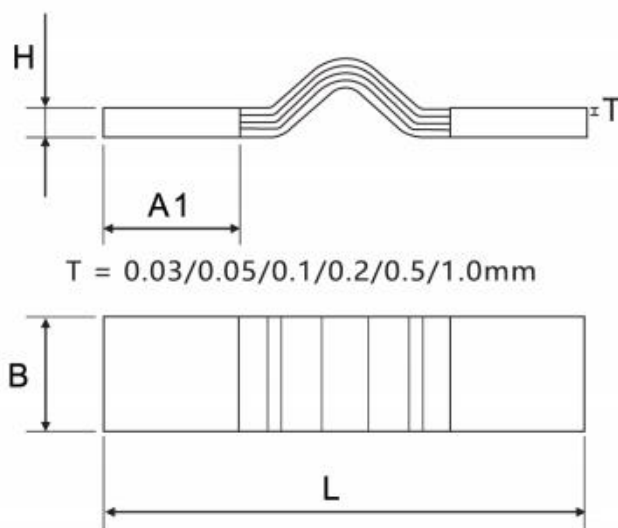




电池软连接 Battery Flexible Busbar

人禾电子是一家领先的母线解决方案提供商，适用于多种类型的电池连接。我们可以采用各种材料来设计和创建连接排，以满足客户的规格需求。

RHI is a leading provider of busbar solution for all types of battery connections. We can design and create busbars using a variety of materials to meet all customer specifications.



铜箔软连接是由0.10mm（标准设计）或者按客户要求使用0.2、0.3、0.5、1.0mm的多层铜箔组成，安装接触面采用压焊设计生产。Flexible busbar is made of multi-layer copper foil thickness 0.1mm. Copper foil thickness also can be 0.2,0.3,0.5 and 1mm as customer's request. The contact surfaces are welded.

浸塑软铜排/Bus Bar with PVC Dipping



热缩绝缘软铜排/Bus Bar with Heat Shrink Sleeveings



柔性母排/Insulated Flexible Bus Bars (Without Welding)



硬铜排系列 SOLID COPPER BUSBAR

技术参数

Technical parameters

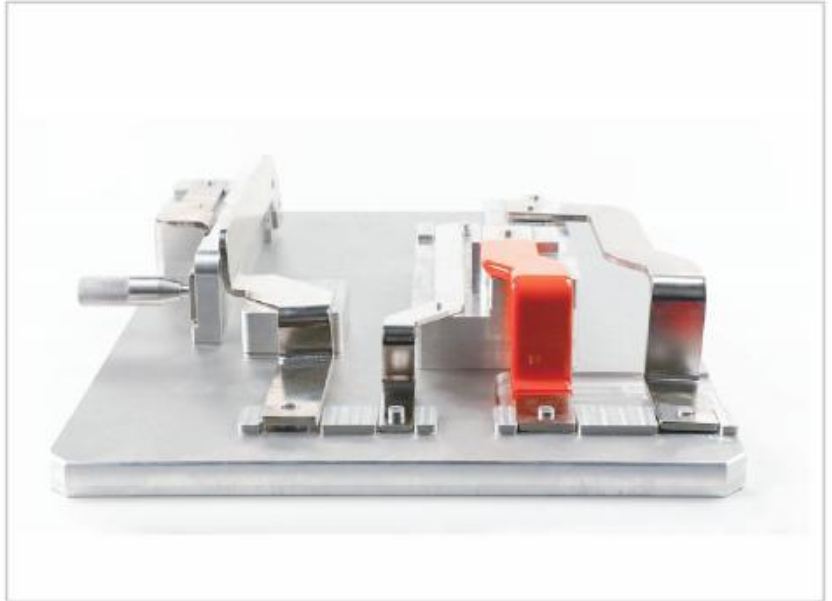
导体材质: T2紫铜,含铜量≥99.9% 可镀锡、镍、银

绝缘材质: PE/PVC/EVA/PAI2/PI

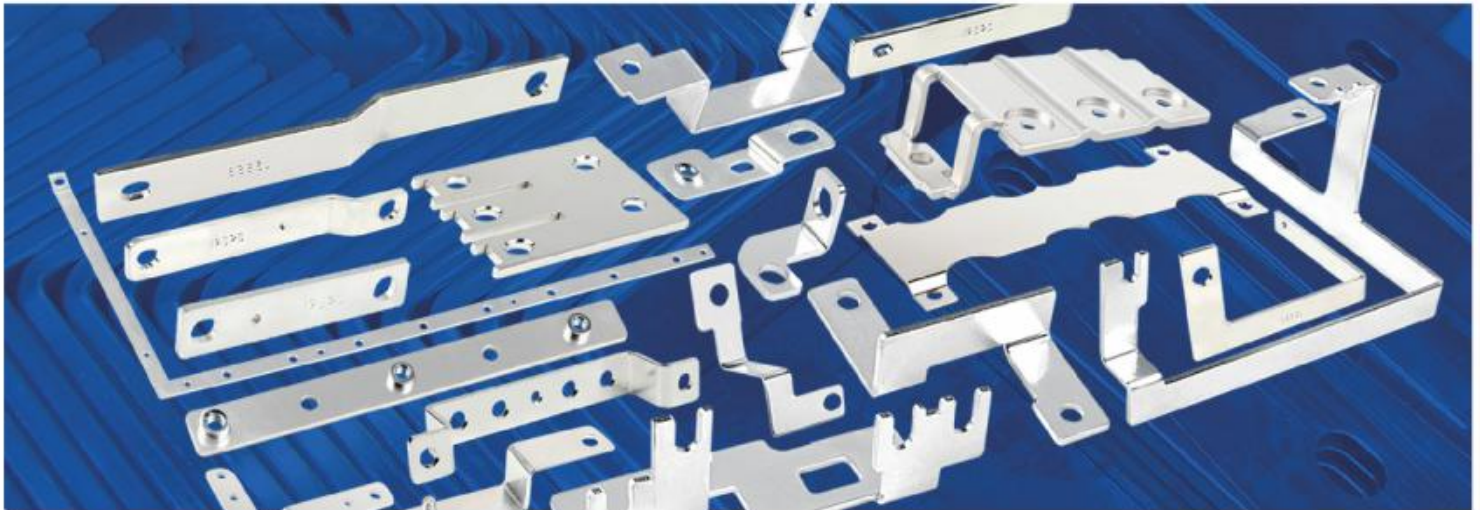
颜色为黑、红、橙. 耐压3000V.

Conductor material: T2 copper content ≥ 99.9%
Tin, Nickel & Silver plated.

Insulation material : PE / PVC / EVA / PA12 / PI
Color: black, red, orange.
Withstand voltage 3000V



人禾电子提供设计生产解决方案, 根据客户要求使用铜材或其他材料, 可多种表面处理, 折弯和冲孔工艺。
If there is any special design, we can also use steel or other materials. Products can be produced by bending, punching etc. The surface can be finished as customer's request. RHI helps to give you solution on the design.



铜排载流量估算法 Estimation method for copper busbar current capacity:

单条铜母排载流量=宽度*厚度系数 Single busbar current = width * thickness coefficient

双母排载流量=宽度*厚度系数*1.5 (经验系数) Double busbar current = width * thickness coefficient * 1.5

铜排和铝排也可以按平方数来, 通常铜应该按5-8A/平方, 铝应该按3-5A/平方。

Usually the copper busbar current capacity is 5-8A/mm², the aluminium busbar current capacity is 3-5A/mm².

定制铜排连接/Custom Copper Bus Bar



浸塑铜排连接/Bus Bar with PVC Dipping



热缩铜排连接/Bus Bar with Heat Shrink Sleeveings



浸粉铜排连接/Bus Bar with Epoxy Powder Coating



铝排系列 BATTERY ALUMINIUM BUSBAR

技术参数

Technical parameters

导体材质: 1060铝材或其他牌号铝材, 可镀锡、镍

绝缘材质: PE PVC EVA .可浸塑、浸粉和热缩管

承载电压: 220V-1500V(根据尺寸)

Conductor material: 1060 aluminum or others, tin, nickel

Insulation material: PE / PVC / EVA

Load voltage withstand voltage according to size



铝母线电导体, 重量轻, 易散热, 价格低, 可作为应用的最佳经济选择。

Aluminium busbar as conductor, which is light in weight & easy to dissipate heat & price is low they, can be used as the best economic choice for application.

铝排载流量数据表
Theoretical data of aluminium busbars

规格/mm ² (Specifications)	重量/(kg/m) (Weight)	交流载流量 (A) 25°C AC current			直流载流量 (A) 25°C DC current		
		每相1片 1P	每相2片 2P	每相3片 3P	每极1片 1P	每极2片 2P	每极3片 3P
		20×3	0.171	215	--	--	215
30×3	0.257	315	--	--	315	--	--
40×3	0.342	365	--	--	370	--	--
40×4	0.456	480	--	--	480	--	--
50×4	0.54	540	--	--	545	--	--
50×5	0.676	665	--	--	670	--	--
60×6	1.026	870	1350	1720	880	1555	1940
60×8	1.368	1115	1630	2100	1170	2055	2460
80×8	1.82	1320	2040	2620	1355	2400	2975
100×8	2.28	1625	2390	3050	1690	2945	3620
100×10	2.85	1820	2860	3650	1910	3350	4160
120×10	3.42	2070	3200	4100	2300	3900	4860

模组内铝巴/AL Busbar in Modules



硬铝排/Rigid Aluminium Busbar



软铝排/Flexible Aluminium Busbar



挤塑工艺 Extrusion Molding Technology



采用 PVC、PA12 等材料通过挤塑压力设备将连接面包覆形成绝缘层，能生产各种形态的连续型产品。
Use PVC, PA12 and other materials are used to form insulation layer by extrusion pressure equipment, which can produce various forms of continuous products.

■ 工艺特点 Process characteristics

- 1、具有成型一体化，平整稳固。2、生产连续化，加工效率高。3、应用范围广，适用多材料大长度大批量产品
With molding integration, smooth and stable. Continuous production and high processing efficiency. Wide range of applications, suitable for multi material and large length products.



柔性母排 Insulated Flexible Busbar

■ 产品特点 Product characteristics

叠层T2紫铜箔与PVC材料运用挤塑工艺一体成型，母排耐高温，节省空间，可直接冲孔快速安装，灵活美观。
Multi layer T2 copper foil and PVC materials are molded by extrusion process.
The bus bar is high temperature resistant, space saving, direct punching, quick installation, flexible and beautiful.

■ 参考技术参数 Reference technical parameters

最高工作温度Maximum temp: 105°C 最低工作温度Minimum temp: -25°C 厚度Thickness: 2 mm ± 0.2
自动灭火Flame retardant: UL 94V-O 延伸率Elongation: 370%

■ 应用领域 Application

应用于电动汽车，能源电力，电气配电等设备，是粗电缆和硬铜排的理想替代品。
It is an ideal substitute for thick cable and hard copper bar, which is used in electric vehicles, energy, electric power, electrical distribution and other equipment.



PA12绝缘挤塑排/PA12 insulated extrusion busbar



柔性母排/Flexible Busbar



3D折弯连接排/Bending flexible busbar with plating



PI绝缘挤塑排/PI insulated extrusion busbar



浸塑工艺 PVC Dipping Technology

■ 新能源连接浸塑工艺 Dipping technology for energy connection

十余年绝缘浸塑加工经验，独特PVC绝缘塑胶技术配方，成熟工艺流程控制，成就人禾新能源连接高端产品。

More than 10 years of insulation dipping processing experience, unique PVC insulation plastic technology formula, mature process control, the achievement of RHI new energy connects high quality products



■ 工艺介绍 Process introduction

我们掌握每一道工序，设备齐全，有专业技术团队，整个过程严格把控绝缘层技术要求，确保产品安全高效。浸塑铜排铝排加工可按客户的要求定做位置，颜色，耐压性能等，它解决了非常规连接排无法进行绝缘套管的问题。

We master every process, complete equipment, professional technical team, the whole process strictly control the technical requirements of insulation layer, to ensure product safety and efficiency. The processing of impregnated copper bar and aluminium bar can be customized according to customer's requirements, such as position, color, voltage resistance and so on. It solves the problem that unconventional connection busbar can not be used for insulating bushing.

浸塑的工艺是采用特殊的PVC材料，经高温溶解后形成液体，将铜排浸入其中使铜排附着一层绝缘层。浸塑铜排加工可按客户的要求定做厚度，颜色，耐压性能等。

The process of dipping busbar is to use a special PVC material after high temperature dissolution of the liquid, then copper busbar is immersed in it to make an insulated layer on busbar surface. Dipping copper busbar can be customized according to customer requirements of thickness, color, voltage performance etc.

绝缘层工艺 Insulation Technology



热缩管母排 Heat Shrinkable Tube Busbar

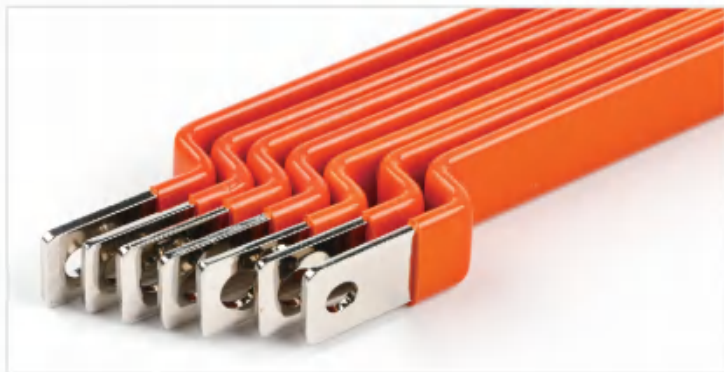
采用 PE热收缩材料套管通过烘枪加热套在铜排上，具有高温收缩、柔软阻燃、绝缘防蚀等优点。适合色相区分，理化电气性能优异，应用于电气设备等连接。

PE heat shrinkable material sleeve is used to heat the copper bar with drying gun, which has the advantages of high temperature shrinkage, soft flame retardant, insulation and corrosion resistance.

环氧树脂浸粉母排 Epoxy Coating Busbar

采用环氧树脂喷涂附着绝缘层，表面平整美观无翘边，设计更紧密，有绝缘性能高、结构强度大和密封性能好等优点，在电机和电子元器件的绝缘及封装上得到广泛应用。

Use sprayed with epoxy resin, the surface flat and beautiful. Such as high structural strength, high insulation and good sealing. It has been widely used in the insulation of electrical appliances and electronic components.



浸塑母排 PVC Dipping Busbar

采用特殊PVC材料，将铜排浸入附着绝缘层。材料环保阻燃，可定制多种颜色。表面光滑平整，厚度均匀，附着力强，在腐蚀，酸碱，盐雾，阻燃等测试上拥有良好表现。

Use eco-friendly PVC material to dipping busbar attach insulation layer. Customized in various colors. It has smooth surface, uniform thickness. It has good performance in flame retardant, salt spray and other tests.



BATTERY PROTECTIVE COVER

人禾电子 保护套系列

性能参数 Performance Parameter

PVC护套产品符合欧盟REACH、ROHS环保标准，美国UL94V-0阻燃级别，各项指标符合国内外标准。产品广泛应用于各种新能源汽车、电源机房、电工电气、线束线缆、电子配件、五金机械设备等领域。

All PVC Products reach EU REACH, ROHS, UL94V-0 Flame Retardant Standard. Each indicator meet domestic & overseas standard.

Widely used in new energy vehicles, power supply, electrical & electronic accessories, wire harness & cables, mechanical equipment or other fields.

产品性能测试表 Product Performance

测试项目 (Item)	测定值 (Value)	单位(Unit)
比重 Density	1.28	-
引张硬度 Extension Hardness	150	kg/cm ²
伸张率 Elongation	302	%
引裂强度 Tear Strength	17.5	Mpa
耐压要求 Voltage	DC、3000V、60s	<1mA
绝缘要求 Insulation	DC、1000V、60s	>1000MΩ
耐热冲击 Thermal shock resistance	UL224 250°C × 4hr	不龟裂/不粘黏 (No cracks/No paste)
表面硬度 Surface Hardness	70	-
热老化后拉伸强度 Tensile strength after thermal aged	UL224 158°C × 168hr	>7.3Mpa
破坏电压 Destroy Voltage	10	KV
耐油性 (抗张力惨率) Oil Resistivity	90	%
阻燃性能 Flame Retardant Grade	UL94V-0	-
高低温老化 High and low temperature aging	(-40-125°C) × 168hr	-
环保等级 ECO Grade	ROHS/REACH	-
6P邻苯测试 6PTest	不含/NO	-

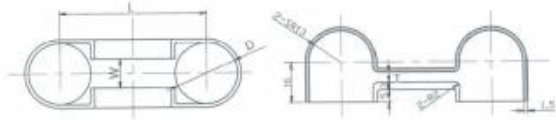
铜排保护套系列

Battery Busbar Covers



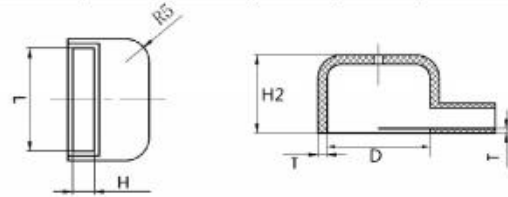
● 连体式保护盖(Siamesed Types)

Model (型号)	D	L	T	W	Suited Cabled
	mm	mm	mm	mm	
TP26-58	26	58	4	12	26
TP26-105	26	105	4	12	26
TP30-115	30	115	4	16	30



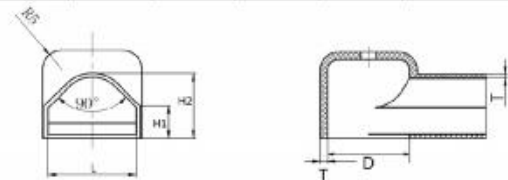
● 独立式保护盖(Singal Types)

Model (型号)	L	H1	H2	D	Suited Cabled
	mm	mm	mm	mm	
TP14 -14	14	2	21	14	14
TP22 - 22	22	4.5	17	22	22
TP22-17-52	22	4.5	17	22	22
TP25 - 40	25	6	22	25	25
TP26 - 26	26	3.5	32	26	26
TP29 - 24	29	24	39	29	29
TP30 - 30	30	3.5	32	30	30
TP30	30	10	32	30	30
TP30*5-48	31	4.5	17	22	22
TP30*10-48	30	10	32	30	30
TP30 - 65	31	4.5	17	22	22
TP40 - 63	40	10	32	39	30
TP50 - 70	50	7	25	50	50
TP50-56-72	31	4.5	17	22	22



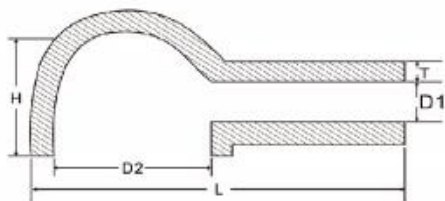
● 线缆铜排综合式(Busbar and Cable Type)

Model (型号)	D	L	T	W	Suited Cabled
	mm	mm	mm	mm	
TP16-9	16	3	9	16	16
TP23-17	22.5	8.5	17	23	22
TP30-115	30	115	4	16	30

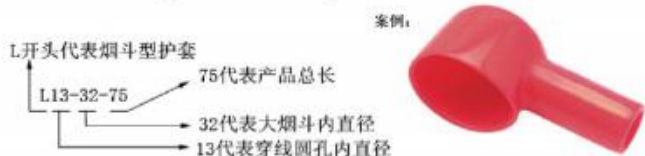


人禾电子 (RHI)可以根据客户要求定制专用PVC护套
RHI Electric (RHI) can customize special PVC sheaths according to customers' requirements.

线缆保护套系列 Cable Lug Covers



蓄电池护套产品命名规则
Naming Rules for Battery Sheath Products



13 Represents the inner diameter of the circular hole,
32 Represents the inner diameter of the large pipe,
75 Represents the total length of the product.

型号 (Model)	尺寸 (Dimension)(mm)					适合线缆规格 (Suited Cabled)
	D1	D2	H	L	T	
L3-9.5-36	3	9.5	15	36	1.2	≤1.5mm ²
L3-11-38	3	11	15	38	1.2	≤1.5mm ²
L4-11-32	4	11	20	32	1.4	≤4.0mm ²
L5-18-64	5	18	30	64	1.2	≤6.0mm ²
FL7-14-15	7	14*15	15	35	1.5	≤16 mm ²
L8-14-40	8	14	20	40	1.5	≤16 mm ²
L8-28-54	8	28	20	54	1.8	≤16 mm ²
FL9-18-19	9	18*19	26	41	1.5	≤16 mm ²
L10-25-60	10	25	22	60	2	≤25 mm ²
L10-14-50	10	14	20	50	1.5	≤25 mm ²
L12-22-43	12	22	20	43	1.5	≤38 mm ²
L12-20-43	12	20	25	43	1.5	≤38 mm ²
L12-16-43	12	16	20	43	1.5	≤38 mm ²
L13-25-56	13	25	21	56	1.5	≤50 mm ²
FL13-14-58	13*13	14	30	58	1.5	≤50 mm ²
L13-22-62	13	22	30	62	2	≤50 mm ²
LX25-75	5~13	25	22	50	1.5	≤50 mm ²
L14-32-72	14	32	27	72	2	≤60 mm ²
L14-25-64	14	25	30	64	1.8	≤60 mm ²
L15-30-90	15	30	43	90	1.8	≤80 mm ²
L15-43-70	15	43	30	70	2	≤80 mm ²
FL15-20-20	15	20*20	25	80	1.5	≤80 mm ²
FL17-20-30	17	20*30	27	65	2	≤100mm ²
L18-20-43	18	20	25	43	1.8	≤100mm ²
FL20-22-30	20	22*30	27	88	1.8	≤125mm ²
L22-29-68	22	29	27	68	2	≤150mm ²
L25-40-98	25	40	36	98	2.2	≤185mm ²
L31-54-110	31	54	40	110	2.2	≤240mm ²
LX35-110	6.0~25	35	43	110	2	适合各种规格线缆 (suited for different kinds of cable sizes)
LX60-110	12~30	60	50	110	2.5	

可以制定各种非标尺寸
Customized shapes are acceptable.



电瓶保护套系列 Battery Terminal Covers



DP414B

DP-5J

DP24-37

DP26-52



FL19-40-60

FL15-40-65

FL20-35-50RB

FL20-35-50LR

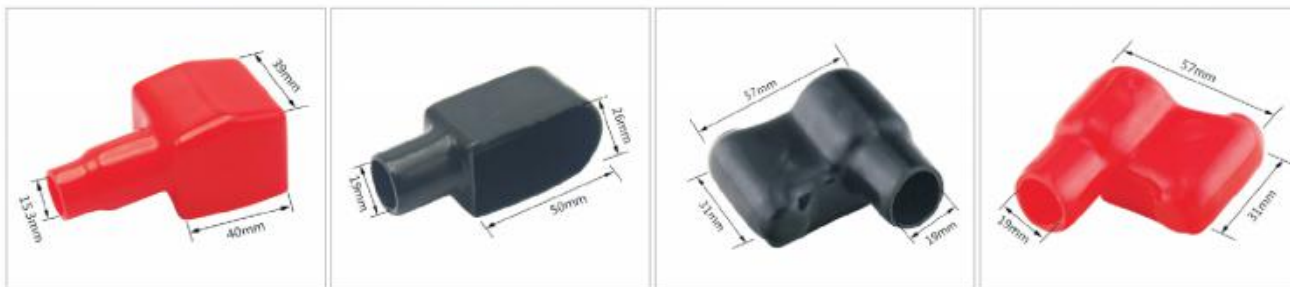


FL18-38-60

FL25-40-72

FL15-51-58LB

FL15-51-58RR



FL15-39-40

FL19-26-50

FL19-31-57LB

FL19-31-57RR



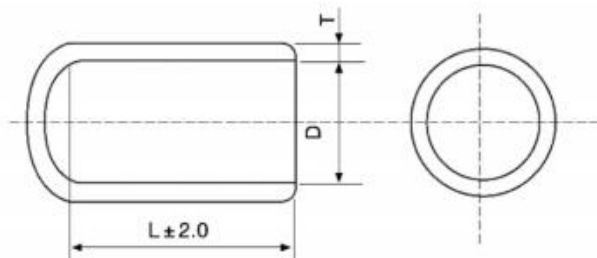
FL 22-50-66LB

FL8-28-46

FL21-35-64LB

FL21-35-64RR

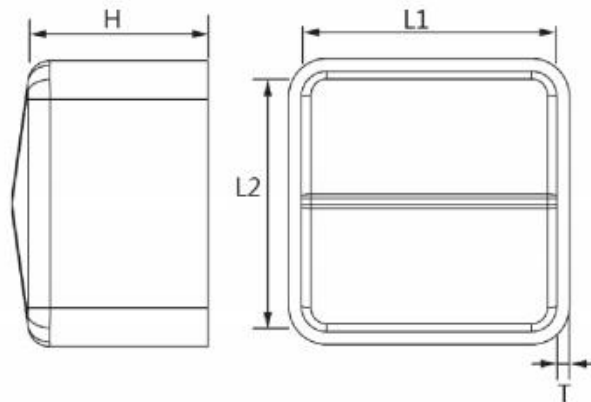
圆形末端帽系列 Round End Caps



D的范围	从 1.4mm 到 267mm
L的范围	≤ 180mm
T的范围	0.2mm-15mm
颜色	红, 黑, 黄, 绿, 白, 蓝, 透明等颜色, 特殊颜色可制定
表面处理	可以接受各种Logo印刷
材料	软质PVC
如何选型	您只要告诉我们D和L的尺寸即可
用途	广泛应用于圆管、钢管、螺纹、绳索、包装、线缆、棍棒、手柄等末端绝缘保护作用。

Range of D	From 1.4mm to 267mm
Range of L	≤ 180mm
Range of T	0.2mm-15mm
Colour	Red,Black,Yellow,Green,White,Blue and Transparent,Special colors are also ok
Finish	Logo printed is acceptable
Material	Soft PVC/Vinyl
How to choose	Just tell us the sizes of D and L
Usage	Widely used for pipe,tube,nuts,bolts,thread, rope,cable,bar,handle end protection

方形末端帽系列 Square End Caps



人禾电子 (RHI)可以根据客户要求定制专用PVC护套!

RHI Electric (RHI) can customize special PVC sheaths according to customers' requirements!

汽摩线束护套系列 Auto Wiring Harness Cover

● T系列 (T Serie)



● TA系列 (TA Serie)



手柄保护套系列 Handle Grips

● 扁平型手柄保护套 (Flat Handle Grips)



● 圆形手柄保护套 (Round Handle Grips)



挂钩帽系列 Hanger Caps

● 圆形挂钩帽 (Round Hanger Caps)



● 扁型挂钩帽 (Flat Hanger Caps)





浙江人禾电子有限公司 ZHEJIANG RHI ELECTRIC CO.,LTD.

地址：浙江省乐清市柳市镇象阳工业区德宇路

电话：0577-61988777

传真：0577-61988711

邮箱：sales@rhielec.com

网址：www.rhielec.com

Add：Deyu Rd,Xiangyang Industrial Zone,Liushi Town,Yueqing City,Zhejiang Province,P.R.C.

Tel：0086-577-61988777

Fax：0086-577-61988711

E-mail：sales@rhielec.com

Web：www.rhielec.com